

PENTHOUSE

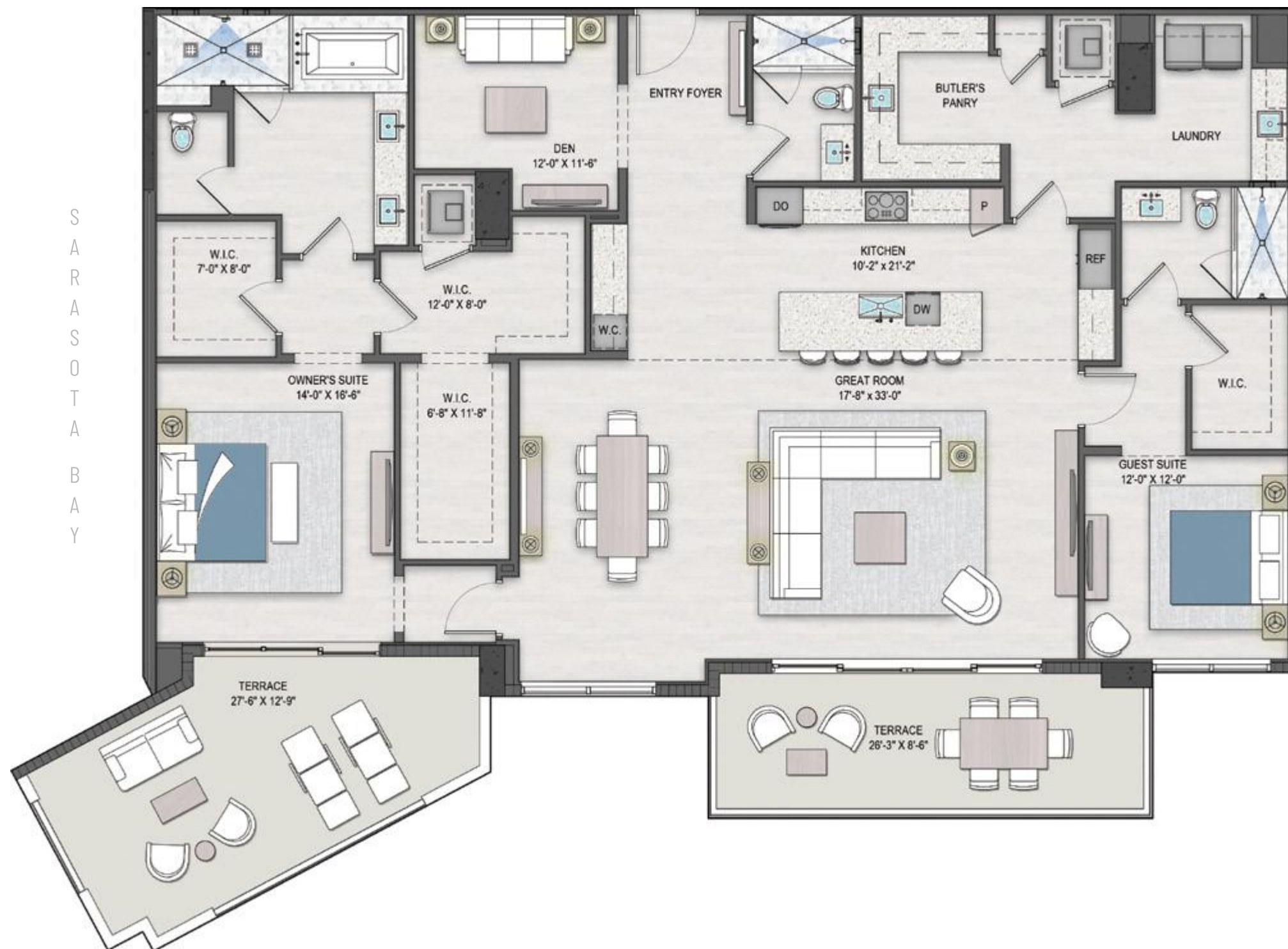
6

2 BEDROOMS  
+ DEN  
3 BATHROOMS

LIVING AREA: 2,669 SQ FT  
TERRACES: 525 SQ FT  
TOTAL: 3,194 SQ FT

SARASOTA BAY

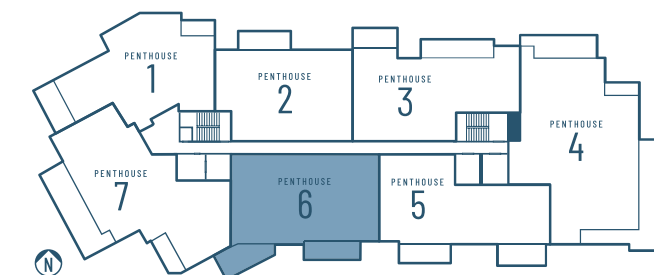
DOWNTOWN SARASOTA



941.220.0828 | BAYSO.com  
50 Central Avenue, Suite 110, Sarasota, FL 34236

KOLTER

Premier Sotheby's INTERNATIONAL REALTY



ORAL REPRESENTATIONS CANNOT BE RELIED UPON AS CORRECTLY STATING REPRESENTATIONS OF THE SELLER. FOR CORRECT REPRESENTATIONS, MAKE REFERENCE TO THE BROCHURE AND TO THE DOCUMENTS REQUIRED BY SECTION 718.503, FLORIDA STATUTES, TO BE FURNISHED BY A SELLER TO A BUYER OR LESSEE. This project has been filed in the state of Florida and no other state. This is not an offer to sell or solicitation of offers to buy the condominium units in states where such offer or solicitation cannot be made. Prices and availability are subject to change at any time without notice. This is a limited time offer. Developer may withdraw offering at any time.

All dimensions are approximate. This floorplan is subject to change without notice. The seller reserves the absolute right, in its sole judgment and discretion, to substitute appliances, materials, fixtures and equipment of equal or greater quality or value for those specified. There are various methods of calculating the total square footage of a condominium unit, and depending on the method of calculation, the quoted square footage of a condominium unit may vary by more than a normal amount. The total condominium square footages as shown in this brochure are based on the "Architectural Method" of measurement and the exterior perimeter measurements of the condominium unit, which include exterior walls, interior columns, fifty percent of demising walls. The method for calculating residential square footage used in marketing materials is different than the method used for calculating residential square footage in the condominium documents. Please see the Declaration of Condominium for more information.

